

Lumen Output at 5700K

System Watts	Lumens	LPW	Lumens	LPW	Lumens	LPW
100	13,300	130	16,000	165	18,000	185
150	18,900	130	24,000	165	27,000	185
240	34,230	130	38,400	165	43,200	185
320	41,600	130	51,200	165	57,600	185



Phenix External Emergency Inverter (18470X-3)



Multi-Level Motion Sensor



Bottom View

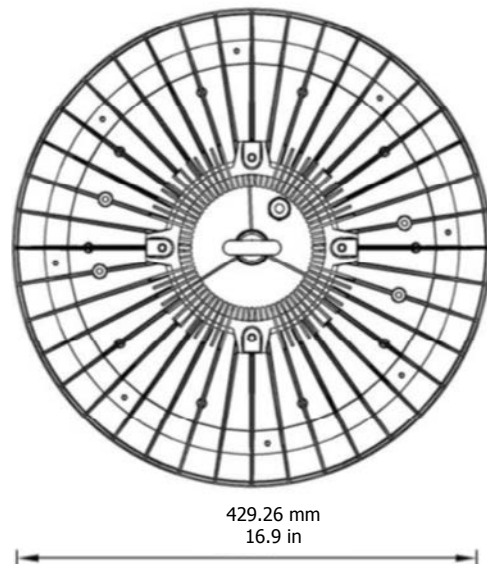
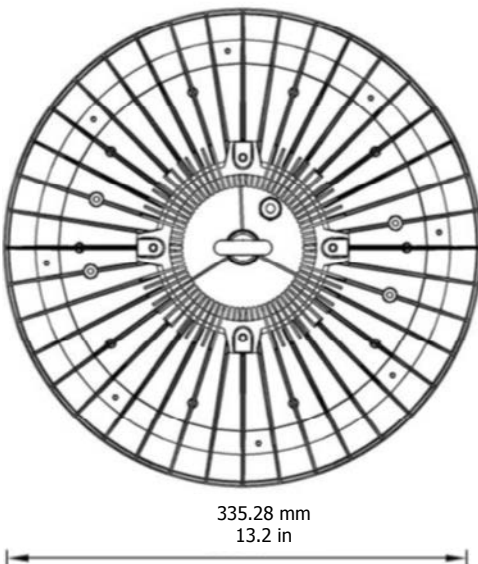
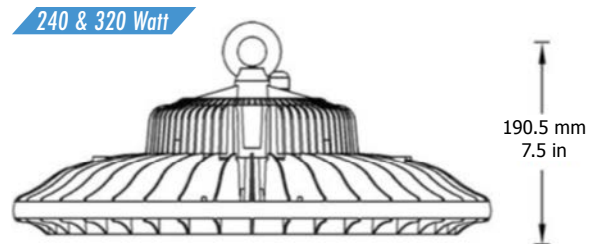
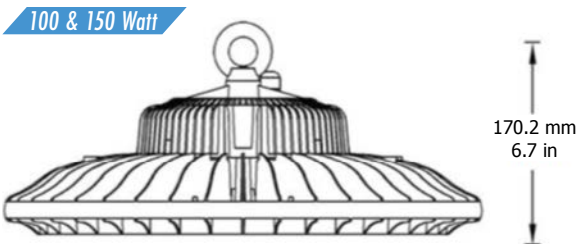


YG Drivers on 60W and 320W UFOs

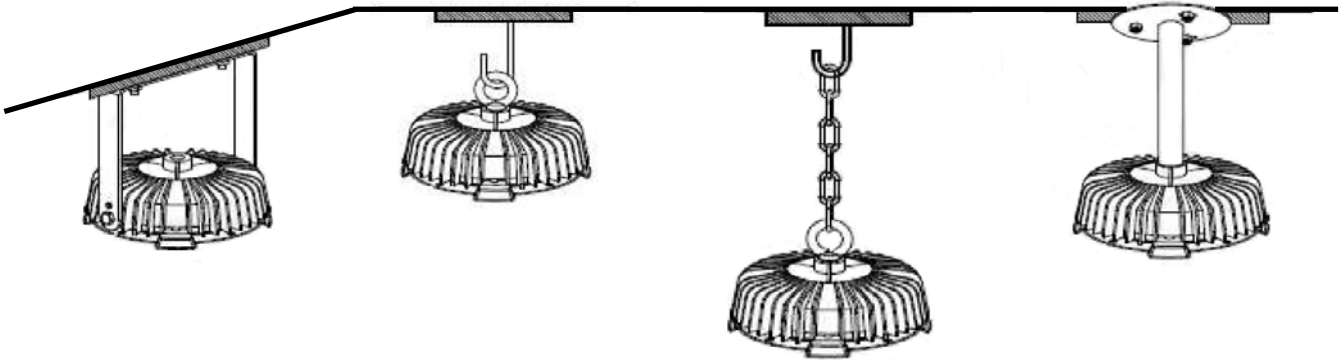


Pendant Adapter (not standard)

Dimensions



Mounting Options Supported



Bracket Installation

Hook Installation

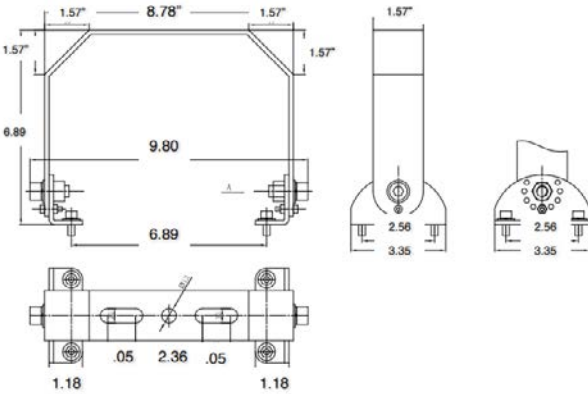
Chain Installation

Pendant Installation

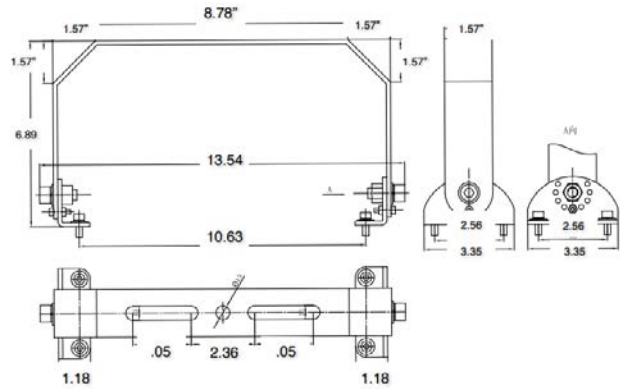
HIGH BAY WATERPROOF UFO

Bracket Dimensions

100 & 150 Watt U-Bracket

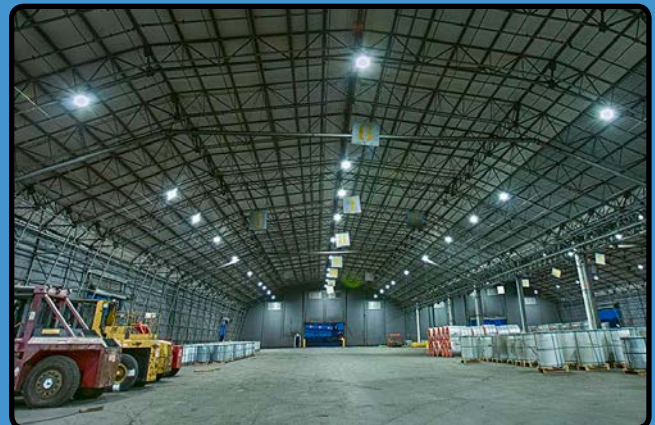
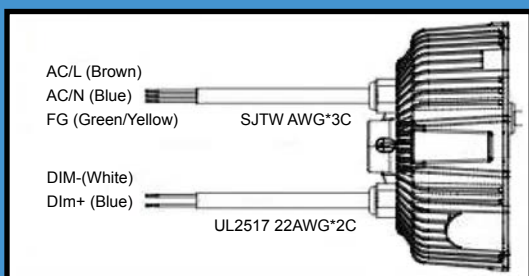


240 Watt U-Bracket

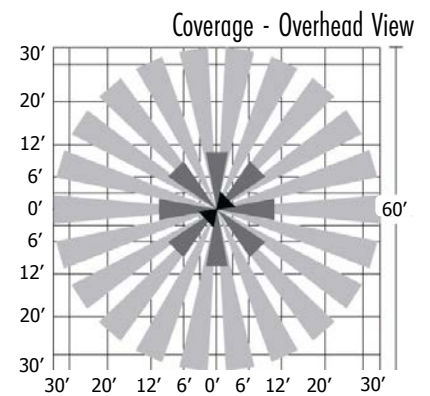
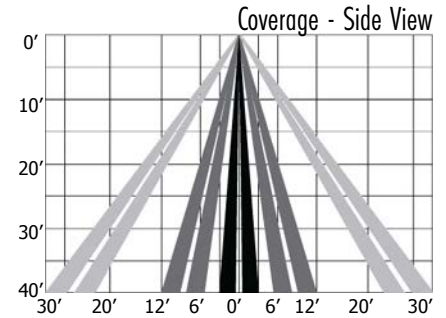
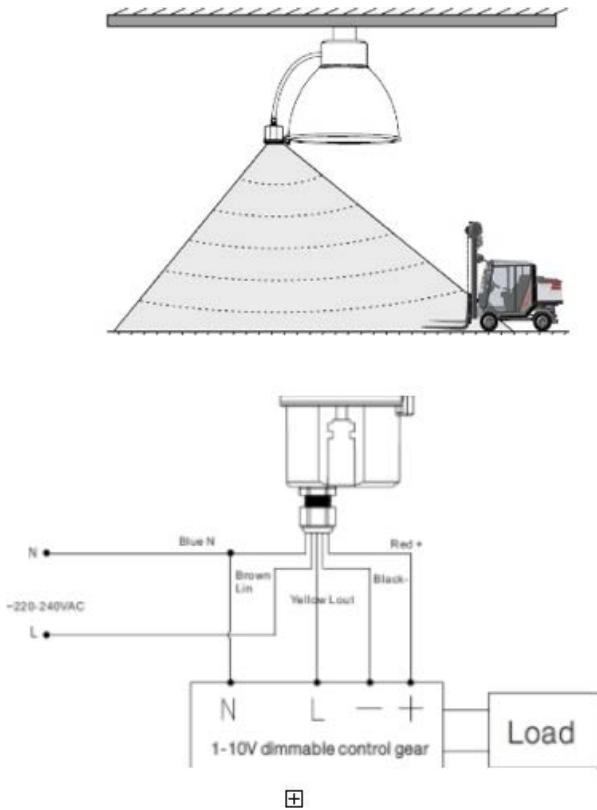


Installation

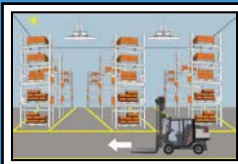
1. Important: Shut the power down.
2. Hang the fixture.
3. Connect the power.



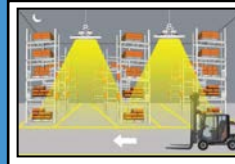
Motion Sensor



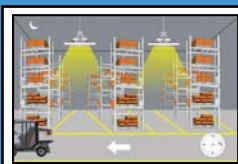
Motion Detection



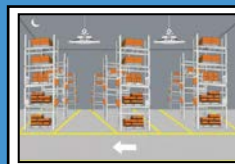
1. With sufficient ambient light, the sensor does not turn the fixture on.



2. With insufficient ambient light, the sensor turns the fixture on when motion is detected.



3. After hold time, the sensor dims the fixture to a low light level if no new motion is detected.



4. After stand-by-period, the sensor turns off the fixture if no motion is detected in its zone.

This 3-Step Dimming/Daylight Sensor, with remote, provides a simple energy-saving solution to use light only when and where you need it. The motion sensor can be mounted at a maximum of 49 feet above the ground and still detect moving objects within as 2,500 square foot area. This sensor also has a daylight sensor for even more added lighting customization and energy savings.