



Description

The ALHS-M area fixture is the perfect LED to replace all your high wattage HID flood and area lights. With a higher lumen output, it will be sure to give any project enough coverage.

DLC Partner: *Ultron Industries*



Applications

| | | |
|------------------|----------------|---------------|
| Auto Dealerships | Outdoor Courts | Outdoor Malls |
| Parking Lots | Sports Fields | Public Parks |

Details

| | |
|---------------|---------------------------------|
| IP Rating | IP67 |
| EPA Rating | 0.9 |
| Materials | Aluminum |
| Lens | Polycarbonate |
| LM70 Life | 100,000 Hours |
| Warranty | 10 Years |
| CRI | 70+ |
| Certification | UL, DLC Premium, FCC, CE, RoHS |
| Driver Man. | YG (100-277V), Mean Well (480V) |
| Chip Man. | Philips |

Electrical

| | |
|-----------------|-------------------------------------|
| Power Factor | 0.99 |
| Frequency | 50/60 Hz |
| Max THD | 10% |
| Operating Temp. | -30° F to 150° F -34° C to 65° C |
| Dimming | 3 in 1 (Resistance, PWM, 1-10V) |

| ALTECH MODEL #: | AE-L-ALHS-M-60-165 | AE-L-ALHS-M-90-165 | AE-L-ALHS-M-120-165 | AE-L-ALHS-M-150-165 |
|-----------------|--------------------|--------------------|---------------------|---------------------|
| DLC #: | U-HALM-60-165 | U-HALM-90-165 | U-HALM-120-165 | U-HALM-150-165 |
| Input Wattage: | 60W | 90W | 120W | 150W |
| Lumen Efficacy: | 165 lm/W | | | |
| Lumen Output: | 9,900 lm | 14,850 lm | 19,800 lm | 24,750 lm |

| ALTECH MODEL #: | AE-L-ALHS-M-60-185 | AE-L-ALHS-M-90-185 | AE-L-ALHS-M-120-185 | AE-L-ALHS-M-150-185 |
|-----------------|--------------------|--------------------|---------------------|---------------------|
| DLC #: | U-HALM-60-185 | U-HALM-90-185 | U-HALM-120-185 | U-HALM-150-185 |
| Input Wattage: | 60W | 90W | 120W | 150W |
| Lumen Efficacy: | 185 lm/W | | | |
| Lumen Output: | 11,100 lm | 16,650 lm | 22,200 lm | 27,750 lm |

Ordering Information

Example: AE-L-ALHS-M-120-185-50K-T3-1-TR-P-BR

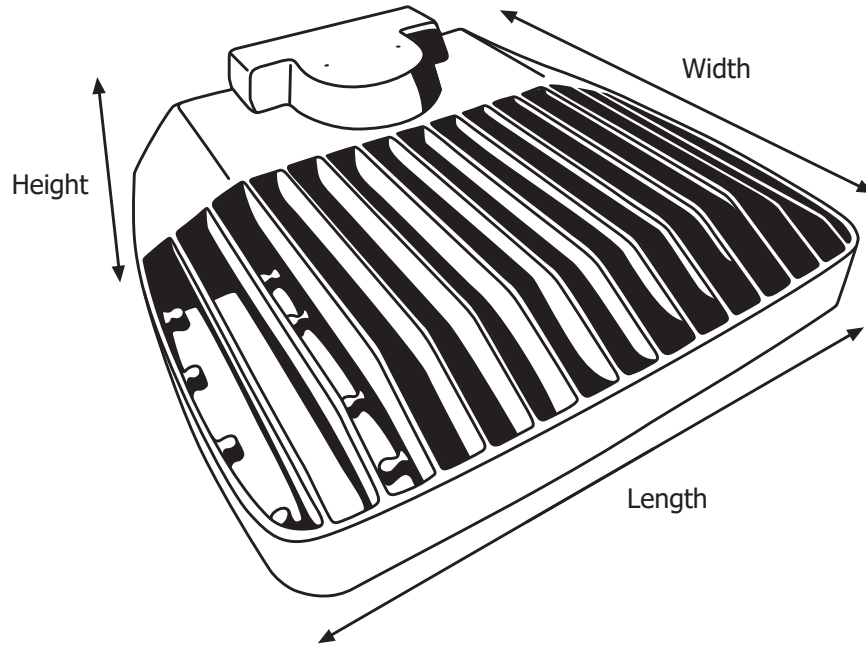
| Wtg | Lumen Pckge | Color Temp. | Distribution | Input Voltage | Mounting | Options | Finish |
|-----|-------------|--------------|--------------|--|----------------------|--|--------------|
| 60 | 165 lm/W* | 30K - 3000K | T3 - Type 3* | 1 - 100-277V* | A - 6" Extended Arm* | P - Photocell | BZ - Bronze* |
| 90 | 185 lm/W | 40K - 4000K | T4 - Type 4 | 2 - 480V | SF - Slip Fitter | MS - Motion Sensor | BL - Black |
| 120 | | 50K - 5000K* | T5 - Type 5 | (Warranty is reduced to 5 years for 480V models) | TR - Trunnion | EI - Emergency Inverter | WH - White |
| 150 | | 57K - 5700K | | | | WP(X) - Additional Whip (X = specified length in ft.; 1.67' is standard) | GR - Gray |
| | | | | | | | SP - Other |

*Standard

Additional Notes

- Only 5000K, 120-277V are stocked locally, check for ETA's
- Life is more than 27 years operating 10 hours a day, based on LM70 standards
- Hot-start delays: .08 seconds (YG driver), 1 second (Mean Well driver)
- Additional charges apply to custom colors

Fixture Dimensions and Weight



| Length | Width | Height | Weight |
|-----------|-----------|---------|---------|
| 13.75 in. | 12.75 in. | 3.6 in. | 12 lb. |
| 349 mm. | 323 mm. | 91 mm. | 5.4 kg. |

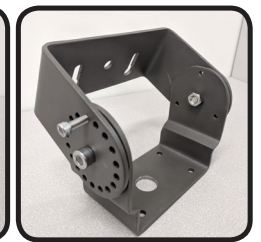
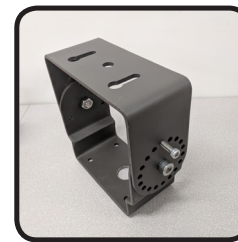
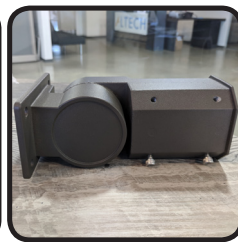
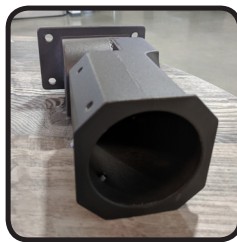
Mounting Options



6-Inch Arm Mount



Slip Fitter Mount



Trunnion Mount

Fixture-to-Mount Installation

1. Match screw holes on the mount with the fixture.
(Refer to image on the right)
2. Run the wire from the fixture through mount.
3. Hand-tighten the screws into place.
4. Tighten the screws with a tool to secure it.
5. Installation complete.

