



Pictured with motion sensor

### Description

The ALHS-L area fixture is the perfect LED to replace all your high wattage HID area lights. With a very high lumen output, it will be sure to give any project more than enough coverage.

DLC Partner: *Ultron Industries*



### Applications

Auto Dealerships	Outdoor Courts	Outdoor Malls
Parking Lots	Sports Fields	Public Parks

### Details

IP Rating	IP67
EPA Rating	0.9
Materials	Aluminum
Lens	Polycarbonate
LM70 Life	100,000 Hours
Warranty	10 Years
CRI	70+
Certification	UL, DLC Premium, FCC, CE, RoHS
Driver Man.	YG (100-277V), Mean Well (480V)
Chip Man.	Philips

### Electrical

Power Factor	0.99
Frequency	50/60 Hz
Max THD	10%
Operating Temp.	-30° F to 150° F -34° C to 65° C
Dimming	3 in 1 (Resistance, PWM, 1-10V)

ALTECH MODEL #:	AE-L-ALHS-L-150-165	AE-L-ALHS-L-240-165	AE-L-ALHS-L-300-165	AE-L-ALHS-L-400-165
DLC #:	U-HALL-150	U-HALL-240	U-HALL-300	U-HALL-400
Input Wattage:	150W	240W	300W	400W
Lumen Efficacy:	165 lm/W			
Lumen Output:	26,750 lm	40,800 lm	51,000 lm	66,000 lm

ALTECH MODEL #:	AE-L-ALHS-L-150-185	AE-L-ALHS-L-240-185	AE-L-ALHS-L-300-185	AE-L-ALHS-L-400-185
DLC #:	U-HALL-150	U-HALL-240	U-HALL-300	U-HALL-400
Input Wattage:	150W	240W	300W	400W
Lumen Efficacy:	185 lm/W			
Lumen Output:	27,750 lm	44,400 lm	55,500 lm	74,000 lm

### Ordering Information

Example: AE-L-ALHS-L-400-185-50K-T4-1-TR-P-BZ

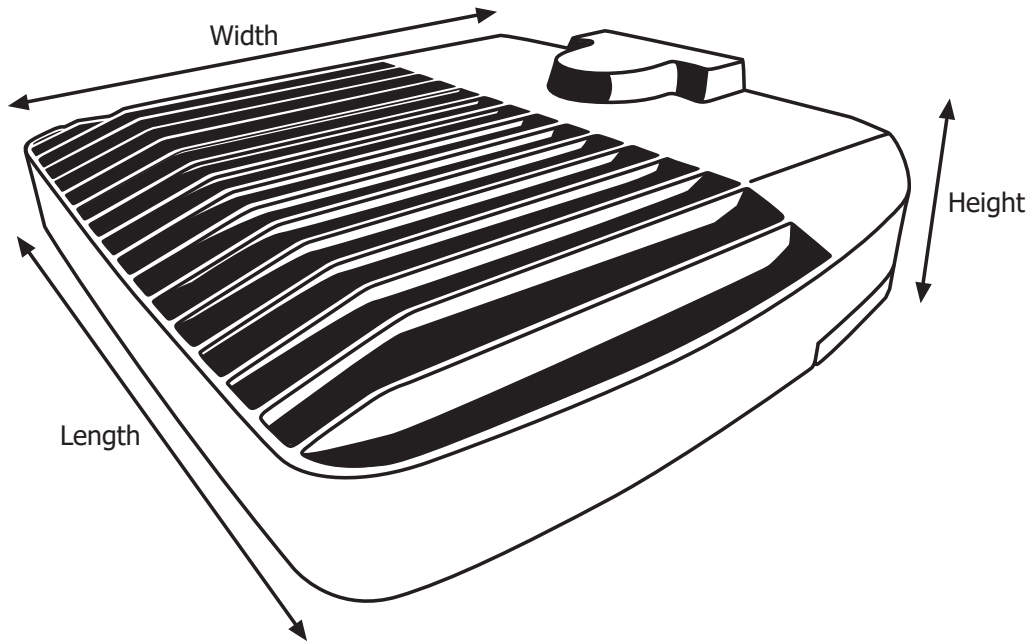
Wtg	Lumen Pckge	Color Temp.	Distribution	Input Voltage	Mounting	Options	Finish
150	165 lm/W*	30K - 3000K	T3 - Type 3*	1 - 100-277V*	A - 6" Extended Arm*	P - Photocell	BZ - Bronze*
240	185 lm/W	40K - 4000K	T4 - Type 4	2 - 480V	SF - Slip Fitter	MS - Motion Sensor	BL - Black
300		50K - 5000K*	T5 - Type 5		TR - Trunnion	EI - Emergency Inverter	WH - White
400		57K - 5700K				(X)P - (X)-Pin Twist-Lock Base (X = select one: 3,5, or 7) WP(X) - Additional Whip (X = specified length in ft.; 1.67' is standard)	GR - Gray SP - Other

\*Standard

### Additional Notes

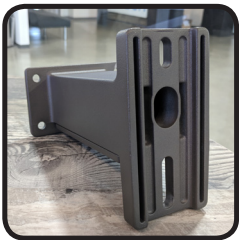
- Only 5000K, 120-277V in BRONZE are stocked locally, check for ETA's
- Life is more than 27 years operating 10 hours a day, based on LM70 standards
- Hot-start delays: .08 seconds (YG driver), 1 second (Mean Well driver)
- Additional charges apply to custom colors

*Fixture Dimensions and Weight*



Length	Width	Height	Weight
19.75 in.	16.8 in.	4 in.	25 lb.
502 mm.	427 mm.	102 mm.	11.3 kg.

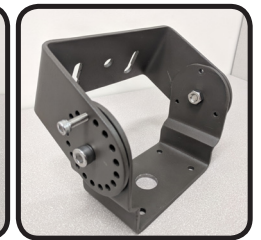
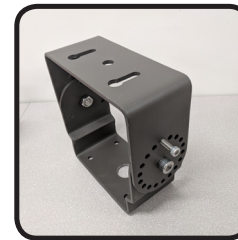
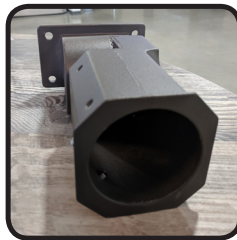
*Mounting Options*



6-Inch Arm Mount



Slip Fitter Mount



Trunnion Mount

*Fixture-to-Mount Installation*

1. Match screw holes on the mount with the fixture.  
(Refer to image on the right)
2. Run the wire from the fixture through mount.
3. Hand-tighten the screws into place.
4. Tighten the screws with a tool to secure it.
5. Installation complete.

