



## Description

The U-SLHO Sports Light fixture has the highest wattage count of any of our fixtures. It's the perfect luminaire to illuminate stadiums and arenas all night and keeps the action easy to see.



## Applications

Outdoor Fields	Concert Halls	Stadiums
Airport Runways	Amphitheatres	Arenas

## Details

IP Rating	IP67
Materials	Die Cast Aluminum
EPA Rating	2.3 (see "Additional Notes" for details)
Lens	Glass (Anti-Glare Reflector)
L70 Life	150,000 Hours
Warranty	10 Years
CRI	80+
Qualification	FCC, CE, RoHS

## Electrical

Power Factor	0.99
Frequency	50/60 Hz
Max THD	12%
Operating Temp.	-40° F to 150° F -40° C to 65° C
Dimming	Optional

MODEL #:	U-SLHO-400-50	U-SLHO-600-50	U-SLHO-1000-50
<b>Input Wattage:</b>	400W	600W	1000W
<b>Lumens:</b>	65,000 lm	96,000 lm	165,000 lm
<b>Equivalent:</b>	2,000W MH	3,000W MH	5,000W MH

## Ordering Information

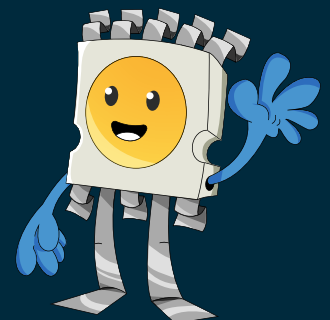
Example: U-SLHO-600-50-160-1-1-TM-EI-BL

Item	Wtg	Color Temp.	Lumen Package	Distribution	Input Voltage	Mounting	Options	Finish
U-SLHO	400 600 1000	30 - 3000K 40 - 4000K 50 - 5000K* 57 - 5700K	135 - 135 lm/W 160 - 160 lm/W*	1 - 25°* 2 - 45° 3 - 60° 4 - 90° 5 - 100°	1 - 100-277V* 2 - 480V	TM - Trunnion* Mount	MS - Motion Sensor P - Photocell EI - Emergency Inverter (X)P - (X)-Pin Twist-Lock Base (X = select one: 3,5, or 7) WP(X) - Additional Whip (X = specify total length in ft.; 2.67 is standard)	BL - Black* BZ - Bronze WH - White GR - Gray SP - Other

\*Standard

## Additional Notes

- Check for ETA's
- Laser light beam accessory available upon request
- EPA 2.3, can withstand winds up to 125 mph, exceeding the US standard of 100 mph
- Additional charges apply for items under "Options" column and non-standard colors



*Lumen Output (based on 5000K)*

System Watts	Dist. Angle	Lumens	lm/W	B	U	G	Lumens	lm/W	B	U	G
400	25°	56,259	141	5	0	1	66,686	166	5	0	1
	60°	55,450	139	5	0	1	65,847	164	5	0	1
600	25°	86,952	145	5	0	1	103,061	172	5	0	1
	60°	83,368	139	5	0	1	98,810	165	5	0	1
1000	25°	-	-	-	-	-	169747	169	5	0	1
	60°	-	-	-	-	-	164,427	164	5	3	1

*Fixture Dimensions and Weight*



Length	Width	Height	Weight
22.44 in.	22.44 in.	15.94 in.	44.1 lb.
570 mm.	570 mm.	405 mm.	20 kg.

*Wiring Precaution*

The international color scheme is brown (hot), blue (neutral) and green/yellow (ground) wiring. Always disconnect power when installing or troubleshooting. Consult a licensed technician.

